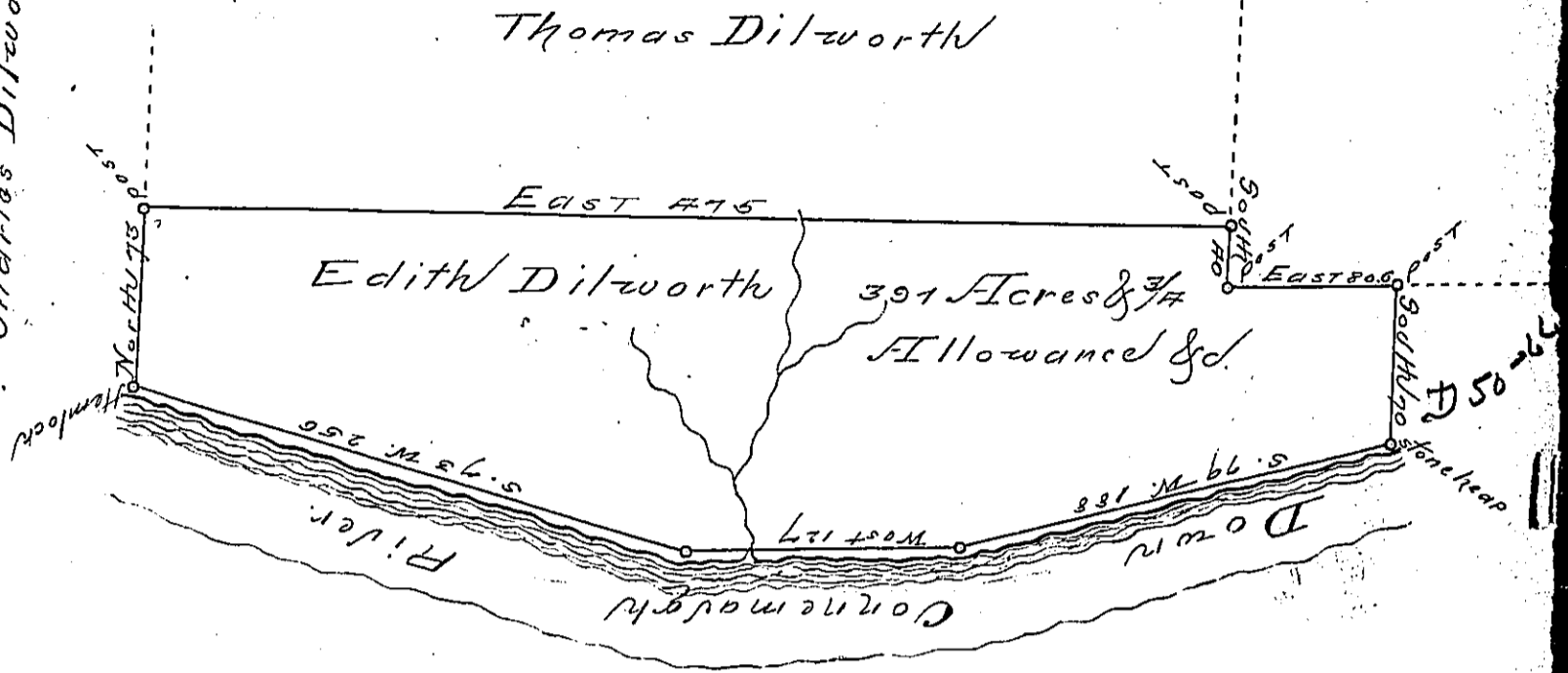


Page 280
Charles Dilworth



I surveyed the 3^d day of December 1794, the Above Tract of Land containing three Hundred and Ninety one Acre & three quarters and Allowance of six Per Cent Adjoining Thomas Dilworth in the County of Westmoreland by Virtue of A Warrant Granted to Edith Dilworth dated the 3^d day of December 1793

To Daniel Brodhead Esq
S. G. of Pennsylvania

James Ross Esq.

IN TESTIMONY that the above is a copy of the original remaining on file in the Department of Internal Affairs of Pennsylvania, made conformably to an Act of Assembly approved the 16th day of February, 1833, I have hereunto set my Hand and caused the Seal of said Department to be affixed at Harrisburg, this
— thirtieth — day of — March — 1894

Thos. Stewart
Secretary of Internal Affairs.